



P1 Curriculum Meeting





Starting School

- At St Colmcille's Primary School, we are fully committed to the Northern Ireland Curriculum and embrace the importance of the Early Years.
- We work hard to ensure all Primary 1 children experience a smooth transition from pre-school settings.



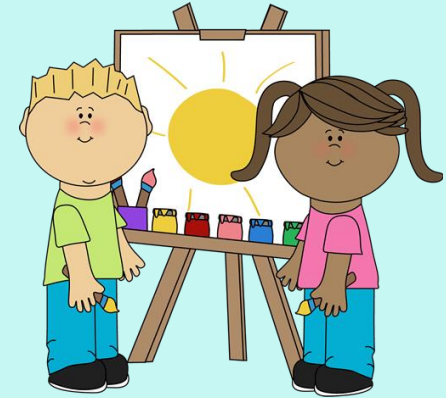
Our Approaches to Learning and Teaching in the Foundation Stage

- Children learn best when learning is interactive, practical and enjoyable.
- Teachers and classroom assistants use 'effective questioning' to promote thinking skills and to develop a wide range of vocabulary.
- Children work in stimulating environments and have access to a range of resources.



The Primary 1 Curriculum is set out in Six Areas of Learning:

- Language and Literacy
- Mathematics and Numeracy
- The Arts – Art, Drama, Music
- The World Around Us
- PDMU - Personal Development and Mutual Understanding
- PE - Physical Development and Movement



- At the heart of the curriculum lies an emphasis on the development of skills for lifelong learning and operating effectively in society.
- Through opportunities to engage in active learning children will progressively develop:

- **Cross Curricular Skills:**

- Communication
- Using Mathematics
- Using ICT (Information and Communications Technology)

- **Thinking Skills and Personal Capabilities:**

- Thinking, Problem Solving and Decision Making
- Self-Management
- Working with Others
- Managing Information
- Being Creative



- Teachers plan together in year groups, Key Stages and as part of curriculum teams.
- Planning is collaborative, child focused and informed by previous observations.
- Pupils are actively involved in the planning and reviewing of work.
- Pupils are always aware of the learning intentions and success criteria of each lesson. They are encouraged to discuss their learning, evaluate their work and suggest future learning experiences.

Our Approaches to Planning in the Foundation Stage



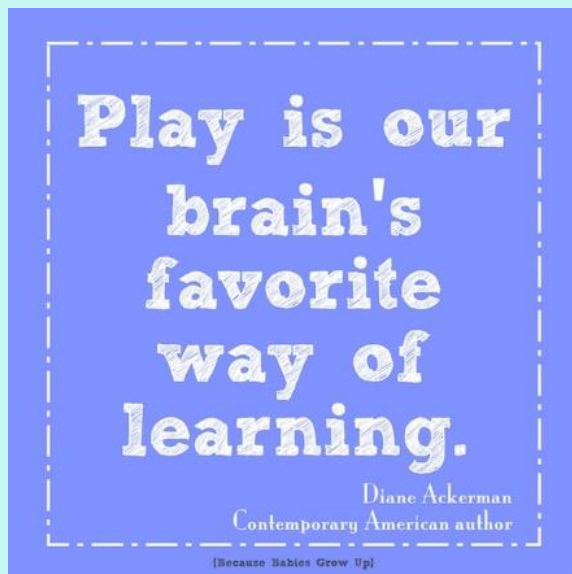
- Assessment in Primary 1 is mainly observation based.
- Adult observations are carried out with the children in an unobtrusive way and inform future planning.
- Children are made aware of their progress by receiving positive feedback and work together with their teacher to suggest ways to improve.
- Teachers assess pupils' cross curricular skills, thinking skills and personal capabilities, levels of concentration and involvement and emotional development.
- Our Speech & Language Team – Mrs Crispi, Mrs Mary Calahane-Woodward and Miss Janice Newark, will continue to deliver Speech and Language intervention to Primary 1 throughout this academic year.



Assessment in the Foundation Stage



What is Play Based Learning?



- Learning through play is a term used to describe how a child can make sense of the world around them.
- Through play children can develop social and cognitive skills, mature emotionally, and gain the self-confidence required to engage in new experiences and environments.
- Children are involved in the planning and creation of play opportunities using the various curricular areas.
- Play activities reinforce and consolidate the learning that is taking place in the classroom.
- Outdoors Thinking course with Clare Devlin has highlighted even more the importance of outdoor play.



Structure of Learning Through Play

- Every day play is set up in our outdoor play area and our 'creative skills classroom.'
- Play is set up to develop learning in all areas of the curriculum.
- Children are involved in the planning process and contribute their thoughts, ideas and opinions during Play.
- Children are given freedom to choose a play activity but are also encouraged and prompted to move around the different activities to ensure all their skills are being developed.
- Progression in play reflects the observation and assessment of children's knowledge, skills and attitudes to provide developmentally appropriate experiences.
- Children come to school already as skilled learners. Through our observations, assessment and professional judgement we gain valuable insights into how each one learns best.
- This information informs our planning to meet the needs of each individual child.

- Progression in play comes about as a result of a real understanding of the interests, needs and experiences of the child



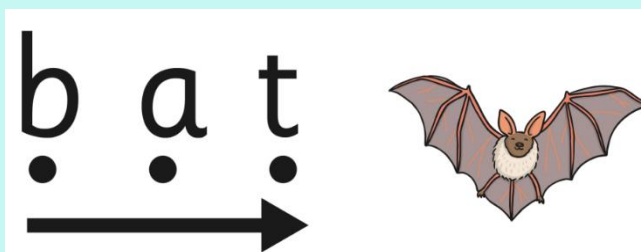
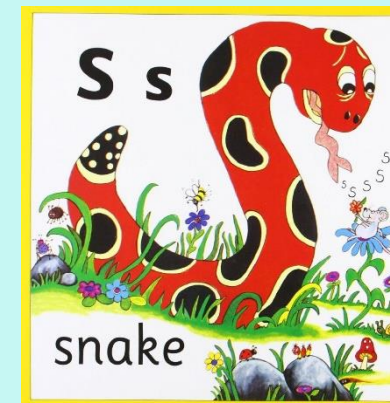


**Our first
topic this
year.**



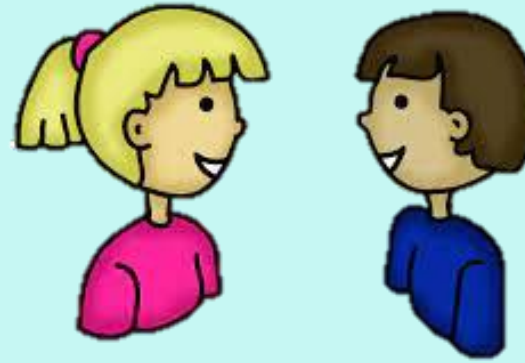
Phonics

- In Primary 1 we follow the Jolly Phonics programme.
- Jolly Phonics is a fun and child centred approach to teaching phonics.
- With a song and an action for each of the letter sounds, the Jolly Phonics method is very motivating and engaging for young children.
- The sounds are taught in a specific order (not alphabetically). This enables children to begin building words as early as possible.



Communication

- Seesaw is our main form of Communication.
- Reading Record can be used as a home/school link.
- Parent teacher meeting to take place in Term 1.
- Written report at the end of the school year.
- Concerns – please call the school/send a message on Seesaw to arrange an appointment.



Attendance

- Lessons begin at 9am.
- If your child is absent, please send a message on Seesaw or phone to inform the school with the reason for their absence.
- **Breakfast Club** is open every morning from 8.15am – 8.45am.
- **School Finish:** 1.55pm Monday – Thursday. 1.50pm each Friday.
- **After Schools:** 2-3pm Monday – Thursday. Cost of £2 payable on School Money.
- **Homework Club:** 3-4.30pm Monday – Thursday. Additional cost payable on School Money.



- Primary 1 children received their first homework booklet on **Monday 23rd September.**
- Homework activities are set from Monday – Thursday.
- ✓ **Sept – Oct:** Play Based – focus on Talking & Listening, key skills.
- ✓ **November – June:** Work Booklet, Sounds & Words book, Reading.

Homework focus:

- ✓ Monday – Numeracy Focus
- ✓ Tuesday – Literacy Focus
- ✓ Wednesday – PDMU/Grow in Love Focus
- ✓ Thursday – Seesaw Online WAU Focus



Homework



Reading

- Throughout Term 1 the focus will be developing confidence in book handling skills.
- As the children progress through the Primary 1 reading scheme they will become familiar with common words (the, of , it etc) however they may require some help to break down unknown vocabulary.
- **New Scheme** – Boost Learning
 - ✓ Interactive resource – physical reading books and eBooks.

The logo for 'Boost' features the word 'Boost' in a bold, blue, sans-serif font. Above the letters are several small, colorful dots in red, yellow, blue, green, and grey, arranged in a pattern that suggests movement or energy.

Boost

eBooks

- ✓ Each eBook features an audio recording that is synchronised to the text, highlighting each word as it is heard.
- ✓ The eBooks also include checkpoint quizzes and an end-of-book quiz to measure children's comprehension skills.



Rising Stars Reading Planet

I Can See A Bat Checkpoint quiz 1

Version: 1.0.15.31

What can you see in this picture?
Click one.

a) a bat

b) a rat



Question : 2 of 2

1 2

Navigation icons: back, forward, refresh, home

- ✓ The questions in the end-of-book quizzes are linked to important reading skills such as vocabulary, sequencing and inference.



Reading Cont.

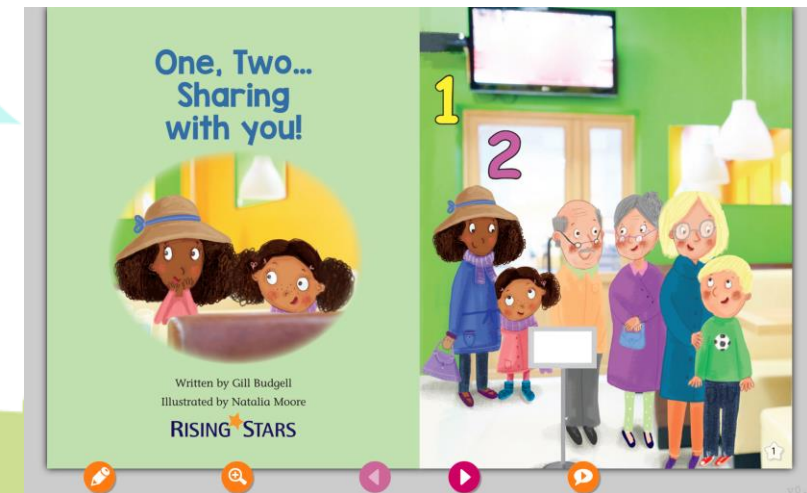
- Reading will be set for homework every night after Halloween.
- ✓ **Monday** – New online ebook.
- ✓ Tuesday – 2nd read of online eBook and completion of quiz/comprehension activities.
- ✓ **Wednesday** – New physical Book.
- ✓ Thursday – 2nd read of physical book.



Monday – Physical Book



Wednesday – eBook



- Whole school behaviour plan.
- Classroom systems in place – individual/team/whole class reward systems, clear rules, rewards and consequences presented in a visual child-friendly way.
- Whole school systems in place – principal's award, pupil of the month and star of the week.
- Promoting positive behaviour to provide a safe and secure environment.

Positive Behaviour Policy



PE days are Mondays and Thursdays.

Pupils should wear their PE gear on these days.

- ✓ **Monday** – focus on athletic skills.
- ✓ **Thursday** – focus on dance, gymnastics, outdoor skills etc.

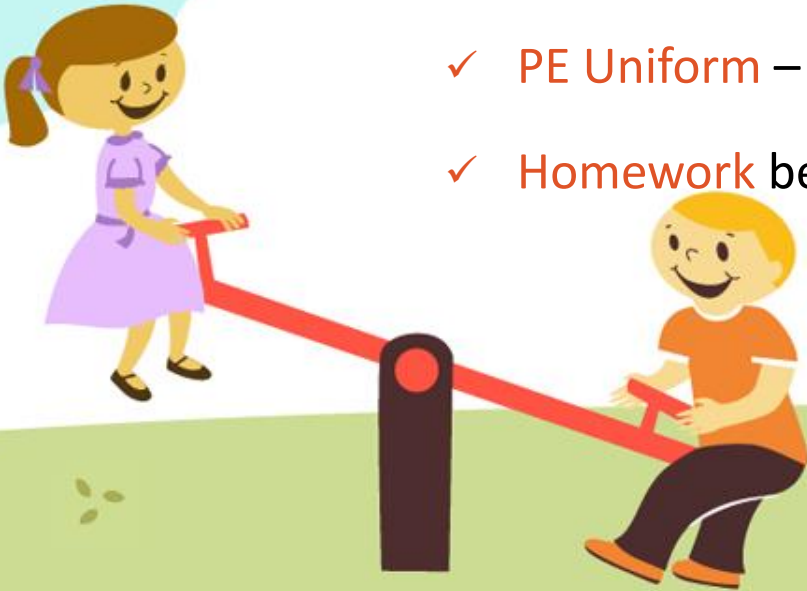


PE



Key Information

- ✓ **School Money** – log in to enter if your child is going to lunch or dinners each day.
- ✓ **Healthy Snack** – Follow healthy snack policy. Please remember we are a nut and rice free school.
- ✓ **Full School Uniform** - Tuesday, Wednesday and Friday.
- ✓ **PE Uniform** – Monday and Thursday.
- ✓ **Homework** begins on Monday 23rd September.



Thank you for listening!



Any Questions?

