

LSC 4 Curriculum Presentation



September 2025



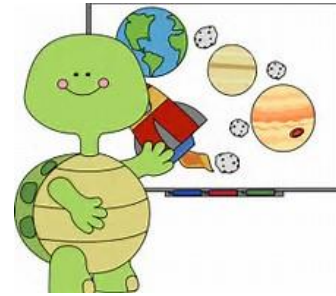
Learning Support Centre 4 (LSC 4)

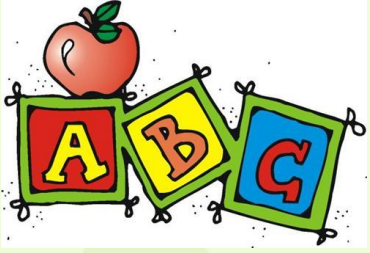
- An inclusive and caring learning environment.
- Focus on each individual pupil's areas of strength and improvement.
- Small class size to provide more adult support in small group and 1:1 sessions.
- Highly differentiated work pitched at the level of each child to develop confidence and encourage progress.
- Colourful and engaging classroom displaying pupil work.
- All children have the use of visuals, a multi-sensory approach to learning, 1:1 and small group teaching to support instructions, language and learning.



Curricular Areas:

- ❖ Mathematics & Numeracy
- ❖ Language & Literacy
- ❖ World Around Us
- ❖ Religion
- ❖ ICT
- ❖ The Arts – Music, Drama, Art and Design
- ❖ PE
- ❖ PDMU (Personal Development and Mutual Understanding)





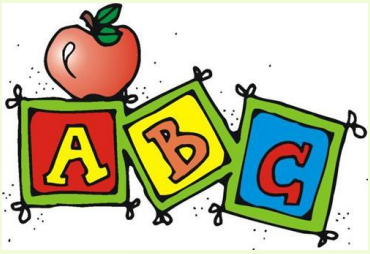
Literacy



Phonics

- Following the Linguistic Phonics programme.
- Daily activities focused on each child's target sound of the week.
- Spellings related to weekly focus are given at the start of the week and assessed on Friday.
- Practical, fun and engaging games and activities to support and reinforce understanding.
- Incorporating Literacy Shed resources to provide visual and creative stimulus for phonics practice, encouraging discussion, vocabulary building, and sentence creation linked to target sounds.





Literacy



Literacy Skills

- The skills taught will often relate to the World Around Us topic and associated writing tasks.
- These will include: punctuation, grammar, sentence structure, and vocabulary development.
- All activities, games, and tasks are differentiated to meet the needs and ability of each individual child.
- Pupils will have the opportunity to develop their skills in:
 - Recognising and forming letters
 - Pencil control
 - Building Stage 1-6 phonics words
 - Recognising tricky words and High Frequency words
 - Exploring sentence structure and punctuation
 - Using adjectives to describe
 - Exploring rhyming patterns
 - Counting syllables in words
 - Extending sentences
- Literacy Shed videos and resources will be used to provide engaging visual prompts for writing, encourage discussion, and inspire creative tasks linked to phonics, grammar, and descriptive language.



Literacy



Writing

- Range of activities to build on basic writing skills, using different forms of writing, while incorporating grammar and punctuation concepts covered in class.
- Children will complete various activities e.g. ordering words in sentences, sequencing, cut/stick activities etc.
- Links between writing activities and our World Around Us topic, shared class text etc.

Talking and Listening

- Whole class, group and paired discussions are carried out related to our topic work and other curricular areas.
- Oral comprehension exercises and listening skills activities to reinforce understanding.
- Opportunities to ask and answer questions and take part in drama activities to support learning.
- Speech and Language activities with SpL therapists (Withdrawal of some children for SpL activities/1:1 work).





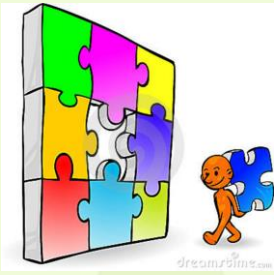
Literacy



Reading

- Children will have opportunities to listen to stories, partake in shared, independent and guided reading.
- Through guided reading sessions pupils will build on their reading fluency before progressing to learn the skills of prediction, clarification, questioning and summarising at a level they are comfortable with.
- Pupils are given activities and tasks to develop their reading and comprehension skills.
- Reciprocal reading strategies will be taught to enhance children's reading skills and develop their understanding.
- Blend of ebooks and physical books will be used from the Rising Stars - Reading Planet reading scheme.





Numeracy

Mental Maths

- Games and activities to build confidence and consolidate understanding of concepts.
- Children will learn strategies for counting and the four number operations within numbers they are comfortable with.

Numeracy, Numeracy Topic & Problem-Solving

- Children will complete Numeracy activities in the areas of Number, Topic and Problem Solving (at a level to suit the needs and abilities of each pupil).
- Number - understanding number, addition, subtraction, multiplication, money, division,, fractions, decimals etc.
- Topic - shape and space, handling data, measure, position and movement.
- Problem-Solving & Investigations- focus on numeracy problems and open ended tasks to help pupils apply their skills in real-life contexts.





The World Around Us



The World Around Us

- Each term a topic is chosen and various activities planned to support and develop knowledge and understanding across the areas of Science, History and Geography.
- Cross curricular links to other curricular areas, helps pupils to make connections between different areas of their learning.
- Children will be provided with many opportunities for hands on real life experiences e.g. bus outings, Eco Garden, educational field trips .etc.





Physical Education



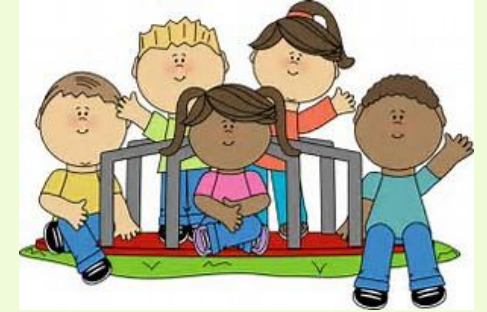
PE

- Games, athletics, gymnastics, team sports and skills are taught throughout the year using a structured programme.
- Children learn about the importance of exercise and keeping our bodies fit and healthy, participation in these lessons is very beneficial for the physical and mental wellbeing of the pupils and is an essential part of the curriculum.
- Football coaching will be provided by IFA in the coming weeks.
- LSC4 pupils will attend swimming lessons at Down Leisure Centre on Monday for one term, this is part of the Key Stage 2 PE curriculum.





Integration



- Children integrate with their mainstream classes each week for various lessons and activities such as - coaching, PE, Religion, WAU and Art.
- During choir, assemblies and visits and workshops from outside agencies, groups and organisations, pupils join and participate with their respective year group.
- Key Stage 2 staff work closely to ensure active participation, good collaboration, areas for various classes to cooperate with one another and to maintain the good standard of behaviour expected in all classes.



Other Information

- Thursday Bus Trip- Various LSC classes take turns to explore outdoor environments. Suitable footwear and a waterproof coat would be recommended.
- Cookery- Pupils have experiences of developing life skills, such as making and preparing foods, as well as hygiene and team-work skills. Making links with other curricular areas, such as World Around Us and Numeracy Topic- Measures.
- Breakfast Club is available each morning from 8.15 am.
- After-School Clubs- Clubs are available Monday to Thursday from 3 - 4pm and Homework Club is available from 4 - 4.30pm.
- SchoolMoney- We are now a cashless school, all bookings and payments should be made on SchoolMoney.
- Seesaw- Please check regularly for important messages from teacher and school.



Primary 6 & 7 Pupils

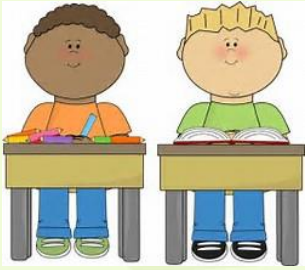
- We will continue to inform parents/guardians throughout the year about any upcoming open days and taster days that we are made aware of.
- If any parents have questions about the transfer process or the different types of post-primary provision available, please do not hesitate to get in touch with me via Seesaw.
- Primary 7 pupils will be involved in preparing for transfer to post-primary this year, this will involve working with their mainstream peers for the P7 Leavers Assembly and to reflect on memories of their time in St. Colmcille's Primary School.



Confirmation

- This year we have a number of our pupils who will be preparing for the Sacrament of Confirmation, the date will be confirmed in due course.
- Confirmation pupils will be involved with their respective mainstream classes for Sacramental Preparation and will also take part in preparing through the *Grow in Love* programme throughout the year.
- We require a Baptism Certificate for any pupils who were baptised outside of the Parish of Downpatrick.
- Any further information will be sent home to parents/guardians when it becomes available.





Our General Classroom Structure



- 09.00 - 09.15: Morning Starter
- 09.15 - 09.30: Daily Mile
- 09.30 - 10.45: Literacy/Numeracy
- 10.30 - 10.45: Snack
- 11.00 - 11:15: Outside Play
- 11.15 - 12.00: Numeracy/Literacy
- 12.00 - 12.45: World Around Us/PE/RE/PDMU
- 12.45 - 1.30: Lunch
- 1.30 - 2.30: World Around Us/PE/RE/PDMU/Integration
- 2.30 - 3.00: Homework/Finishing Up Time/Tidy Up





Classroom Management



- Whole school approach to promoting positive behaviour.
- Pupils are familiar with and reminded of rules, rewards and consequences regularly.
- Pupils have discussed and designed a class charter.
- Instant verbal praise/rewards.
- Classroom systems in place - traffic light system and individual reward charts.
- Whole school systems in place - Pupil of the Week/Month, recognition by principal.



- Homework will normally be set each night and will consist of reading and an alternating Literacy, Numeracy, Religion or topic-based task.
- Homework tasks may be set on Seesaw, Mathletics or as a task to be completed in the homework books.
- Pupils should learn their spellings on a daily basis at home from their Spelling Book.
- Reading books assigned on Reading Planet should be read at home over the course of the week.
- On some occasions a World Around Us or themed homework may be set instead, linking in with our class topic or other school events or initiatives.
- It is very important that pupils bring the required materials to school each day, including their spelling book, reading books and homework books.
- If your child is unable to complete their homework on a particular evening for any reason, please send a message on Seesaw.



Homework



Thank you for listening.

If there are any further questions or anything I can help with, please get in touch with us via Seesaw.

